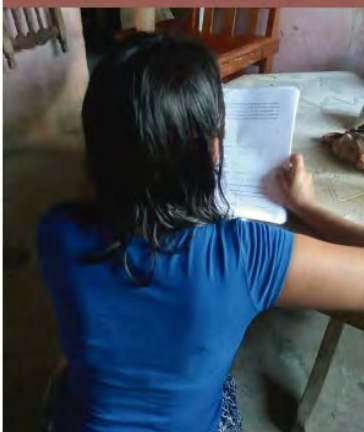


Amoxtipalewilis Ika Tsakwilismeh

*wan tlayewaltiskeh in towtownnakw siwameh wan
masewalsiwameh keman ahsa kiteixihikaitaskeh oso kintewiskeh*



Amoxtipalewilis

Amoxtipalewilis ika tsakwilismeh wan tlayewaltiskeh in towtownakw siwameh wan masewalsiwameh keman ahsa kiteixihikaitaskeh oso kintewiskeh

Tepalewianih

Weyi kaltepalewilis itech Atlequisayán
Weyi kaltepalewilis itech Caxhuacan
Weyi kaltepalewilis itech Huehuetla
Weyi kaltepalewilis itech Hueytlalpan
Weyi kaltepalewilis itech Heytlalpan
Weyi kaltepalewilis itech Ixtepec
Weyi kaltepalewilis itech Olintla
Weyi kaltepalewilis itech Xochitlán itech
Vicente Suárez
Weyi kaltepalewilis itech Zapotitlán itech
Méendez
Weyi kaltepalewilis itech Zongozotla
Instituto Nacional de los Pueblos Indígenas
Universidad Intercultural del Estado de
Puebla

Tein tayekankeh nehin tekit

Dra. Nancy Elizabeth Wence Partida
Dra. María del Pilar Hernández Limonchi
Mtra. Erika Sebastián Aguilar

Ako tekitchiwkeh

Mtra. Ana Miriam García García
Mtra. Raquel García García

Tepalewihkeh

Angela Velázquez Guzmán
Clarisa Jimenez Cruz
Rosa María Sánchez Santiago
Anareli Valdez Moreno
Blanca Rosa Juárez Gaona
Roxana Luna Vázquez
Rosa García García
Ezequiel Vázquez Cuevas
María Gloria Vázquez Ramírez

Kwepatahtolwan

María Elena Pérez de Jesús (náhuatl)
Ana Teresa Juárez Esteban (totonaco)

Mochiwak itech in altepet Puebla, México
Noviembre, 2021

In nepalewil senteixpowi, teaxka itech
okseki tekiwah netahtanilis. Amo wel
powis itech okseki taman nepalewil, tein
amo kixpowa nehin.

P

Tetlawtilistli

In amoxtipalewilis tein monotsa "tlawkwitlawilis wan tlayewakalistli keman ahsa kiteixihikaitah oso kintewiah in totonaco siwameh wan masewalsiwameh" itech in masewal kaltamachtilyan altepet Puebla (UIEP), mochiwa ika in tepalewichiwalisti panpapanpa in masewal xolalmeh, panpa in tekit itechitech xiwit 2021.

Ika in kinekih ixnechtiskeh in nawatiltlakayotl itech in totonaco siwameh wan masewalsiwameh itech in altepet, ika in xolalamoxtli tlakwitlawilis wan tlayewakalistli keman ahsa teixihikaita oso tatewia, ika in masewalnemilis wan siwanemilistli.

In amoxtipalewilis kisa itech in yolilistlahtolli sentilis wan tlapapatilistli tein ki chiwkeh in tayekanianih itech in xolalmeh itechitech altepet nawi Puebla: isAtlequisayán, Caxhuacan, Huehuetla, Hueytlalpan, Heytlalpan itech Serdán, Ixtepec, Olintla, Xochitlán itech Vicente Suárez, Zapotitlán itech Méndez y Zongozotla. No ihkon kikwihkeh tlanohnotsalisti itech in tekit tein kichiwkeh itech in mahtakti xolalmeh, ika in tapowilis itechitech totonaco siwameh wan masewalsiwameh.

In tekitahkwilol mochiwak itech in xolalmeh, nochi siwameh tein nikan nemih keman amo kinpalewiah itech nin xolalmeh kitemowah tepalewilis

itech ohseki xolalmeh oso ika in weyikalnechikol DIF. Ika in siwameh kipiah wehikayaskeh panpapanpa tepalewil temoskeh, wan in moneki mah tomin ki piakah, no keman iwih tepalewiltemotih okseki tokniwan sepa ki tewiah keman ohsepa ki piah itechitech ki tetapowiskeh tein kin chiwilihkeh, wan keman tetapowiah kinixikaihatah; wan keman itech in ohseki xolalmeh amo no kinpalewiah nochi in oksepa kipanowah keman kikwih tepalewilistemotih itech altepe meh.

Nochi tein kipanowah in siwameh tein teixpowiah, no ihkon tikmatih miak siwameh motensakwah oso mokawah mah kintewikan.

In tekit mochiwak ika in tlanonotsalisti itech in xolal amoxtli, kani moixnechtia in masewal tayekankeh amo wel tesakwiliah in kwehmol tein panowa itech ni xolalwan, keyeh kilwiah in ni tekit itechitech tayekanianih itech altepemeh. Yehika in tepalewilis amo kintekipachowah in masewalsiwameh.

Nehin masewal tayekankeh wan tayekanianih kipiah mosenpalewiskeh, wan mah amo chichiko koyetokan itechitech ohse kemih in koyonawatil yetok ika in masewalnawatilis.

In teixihikaitalis ika in totonaco siwa-

meh wan masewalsiwameh amo momatih kemih se tewilis. In tekit tein mochiwak itech xolalmeh amo teixnechtih in teixihikaitalis keyeh in siwameh amo kiixmatih kemih se tewilis yehika amo teilwiah. In tewilis momaka keman in takameh tawantihtokeh wan keyeh keman pilimeh ihkon kinmachtiah, wan ihkon mokawa inemilis. In tekit tech ixnextilih itech in xolalmeh in tewilis tein kachi onkak yeski in kintewiahin siwameh.

Tikchiah, kemih totonaco siwameh, masewalsiwameh wan nochi tein titekitikeh mah in amoxtipalewilis techpalewiah panpapanpa tiktsakwiliskeh in tewilis wan mah ihkon kwalli tiyolnemi-ka wan mah kiixmatilikan in totonaco siwameh wan masewalsiwameh ni nawatiltlakayotl, panpapanpa ihkon mah kitamikan ika ikwehmol wan mah mopalewikan ika nin masewalnemilis wan imasewaltahtol.





Índice

- 3 **Tetlawtilistli**
- 5 **Amoxexelistli I. Tlasemihtolistli itech in amoxtipalewilis**
- 6 **Amoxexelistli II. Sentilyehyekolis**
- 6 2.1 Tlahtolsentilistli itech in LGAMVLV
- 6 2.2 Tatewilis ikan siwameh tein kihtowa in LGAMVLV
- 7 2.3 Nochi tatewilis tein onkakeh opan yetokeh itech LGAMVLV
- 8 **Amoxexelistli III. Tetlachiwilistli tlawawaloni**
- 11 3.1. In masewaltsakwilisti
- 11 3.2. ¿Tonika mo ahsih in totonaco siwameh wan masewalsiwameh itech ixolal keman kitemowah tepalewilis?
- 12 **Amoxexelistli IV. Xonexkachiwalis**
- 14 **Amoxexelistli V. Ohtichiwalis panpapanpa ti tepalewiskeh keman onkas tatewilis**
- 14 5.1 ¿Ton kipiah ki chiwaskeh tayekanianih keman onkaskeh tatewilis?
- 15 Tahkwilol 1. Ohtichiwalis keman ahsa kinemiltewiah, ki tomintewiliah oso ki taltewiliah.
- 16 Tahkwilol 2. Ohtichiwalis keman ahsa ki temagah wan ki awilneyotewiah.
- 17 5.2 ¿Katin ohseki tepalewilis tlatsontekilili wan nemiltepalawilis onkakeh panpapanpa kin palewiskeh in siwameh?
- 19 **Amoxexelistli VI. Ohtichiwalis panpapanpa keman ahsa ki ixihikaitah**
- 19 6.1 ¿Ton kipiah ki chiwaskeh in tayekanianih keman ahsa ki ixihikaitah?
- 20 Tahkwilol 3. Ohtichiwalis panpapanpa keman ahsa ki ixihikaitah
- 21 6.2 ¿Keniw wel ti teixpowiliskeh in ixihikaitalis?
- 22 **Amoxexelistli VII. Tepalewianih wan kaltepalawilmeh ika in tatewilis wan ixihikaitalis**
- 23 **Tahkwilolis**

I Amoxexelistli I

Tlasemihtolistli itech in amoxtipalewilis

1. Ika in amoxtipalewilis tiixnechtiskeh se ohtichiwalis panpapanpa tiktsakwiliskeh in tewilis wan tepalewilis keman kintewiah oso kiixihikaitah in totonaco siwameh wan masewalsiwameh, itech nehin altepet wani Puebla.

2. Ika in amoxtipalewilis ika tsakwiliskeh wan tlayewaltiskeh in totonaco siwameh wan masewalsiwameh keman aksa kiteixihikaitaskeh oso kintewiskeh, tiktemowah:

A. Tikixnechtiskeh in nawatiltakayotl itechi siwameh itech ixolal ika sentekilis wan tepalewilis, panpapanpa in tayekanianih kwalli kipalewikan in totonaco siwameh wan masewalsiwameh wan ihkon mah yeknemikah wan mah amo aksa kintewiskeh oso kinixihikaitas.

B. Mah tepalewikan ika masewalnemilis wan nochipa kitemowikan ni chikawalisti itech in totonaco siwameh wan masewalsiwameh itech in altepet nawi Puebla panpapanpa kiixnechtiskeh wan kitekipachoskeh ni nawatiltakayoti, amo keman kiixihikaitas wan amo keman kitewikan.

C. Mah ohtinechtili ton wel mochiwas keman aksa kitewiah wan keniw wel kinpalewiskeh in totonaco siwameh wan masewalsiwameh itech in xolalmeh itechitech altepet nawi Puebla, keman ahsa kin tewiah oso kin ixihikaitah.

3. Tikixnechtiskeh itech in altepet ohtichiwalis panpapanpa tiktsakwiliskeh wan titepalewiskeh ika in tewilis wan teixihikaitalis ika in siwameh, wan ihkon in tayekanianih mah kixmatikan wan kitekipachokan ni nawatiltakayotl itech totonaco siwameh wan masewalsiwameh. In amoxtipalewilis mo chiwaskia wan tepalewiskia ika itekipanolis itech in tayekanianih wan tepalewikalimeh, ihkon senpalewiskeh in

siwameh wan mah kinsakwilikan in tatewianih.

Kemih tehsa tein ika motahkwilowa amo mochiwa, amo kikwehmosos in tein achto titahkwilohkeh.

4. In tayekanianih itech in xolalmeh kipiah kikwiskeh in amoxtipalewilis panpapanpa ihkon kinpalewiskeh siwameh keman kitewiah oso kinixihikaitas.

5. In tapowilis tein tech tahtowiah tein kintewiah amo aksa kiixmatis wan sayoh mokwis panpapanpa tepalewiskeh.

6. In chiwalisti wan kaltepalewilis tein kitanewtiah tepantlahtoanih, tenemilpalewianih, wan tein tewikah, amo kipiah kitahtaniskeh tomin in tokniwan wan kipiah matischeh imasewalnemilis, imasewaltahtol wan nochipa kitekipanoskeh in totonaco siwameh wan masewalsiwameh itech in xolalmeh.

7. In tayekanianih itechitech xolalmeh kipiah kichiwaskeh tein in amoxtipalewilis kihtowa wan kipiah kinechtiskeh nochi in tayekanianih tein tekutih itech in weyikalnechikolmeh panpapanpa mah kitakan wan mah temakakan ni ixmatilis, panpapanpa mah ihkon mochiwa.





Amoxexelistli II

Sentilyehyekolis

2.1 Tlahtolsentilistli itech in LGAMVLV

Tatewilis: tatewilis wan kemah aksa kilwia okse tokniw mah tatewi oso mah kitensakwili panpapanpa kitewis aksa.

Sesentlamantli tewilis wan tatewilis ika siwameh: Keman aksa sesentlamatli tewia, nemilistatewia, tewia, taltewia, tomintaltewia, awilneyotewia oso temiktia.

Tamanti tatewilis ika in siwameh: nemiltatewilis, tatewilis, tomintewilis wan awilneyotewilis.

Taman tewilis: Nochi tatewilis tein onkakeh.

Akin kitewiah: In tokniwh tein tewiah kitaman. Itech in sentlamanti itech in Ley General itech Acceso itech las Mujeres a una Vida Libre itech Violencia, kihtowa “siwat tetaman xiwit akin kitewiah”.

Tetatewianih: In tokniwh tein aksa kitaman tewia.

2.2 Tatewilis ikan siwameh tein kihtowa in LGAMVLV

Nemiltatewil: In chiwalis tein amo kikawa siwameh mah kwalli yolnemikah. In wel momakas keman onkak kwitlatskopokyotl, tlakawalistli, yolokimatilistli, chikotlamatini, tahtoltewilis, netlalchitlasalistli, netlakanekolistli wan atemowtilistli. In wel tetlachiwalis mah in siwameh tayokoyakan, mah motsakwilikan wan momihtikan.

tatewilis: keman kintewiahsiwameh. Itech in tewilis aksa tatewilis ika imay oso ika se tepos oso tehsa tein tepalewia mah aksa kinkokokan tein wel itech kokoskeh oso tlakayot kokoskeh.

Taltewilis: keman aksa kipatiliah, kinpolowiliah oso kinkwiliah inamawan, intalwan nosointomin tein kinkawilihkeh oso okse teisa tein inaxka.

Tomintewilis: Keman aksa kintominkwiliah in siwameh wan amo kikawah mah kwalli yolnemikan. In no wel momakas keman aksa amo kwalli kitachtawiah kanpa tekitiah oso keman aksa kachi kwalli kintaxtawiah in takameh.

Awilneyotewilis: keman aksa kintlakayolkowah oso kinawiltlakayotewiah in siwameh. In se kwehmolis tein kitsakwiliah siwameh kitewia inemilis wan kiyolkokowa keman in tatewiani tehsa kinchiwiliah.

2.3 Nochi tatewilis tein onkakeh onpa yetokeh itech LGAMVLV

Tatewilis ika ichankawan: In tewilis keman inchanawan kitsakwiliah, kikixtiah, tentsakwiliah, nemiltsakwiliah, kitaltsakwiliah, tominkwiliah oso kimatokah amo akaki nekiskeh

in siwameh.

Tatewilis itech itekit wan ika intemachtianih: Keman aksa kintewiah in tekitianih oso se temachtianih sayoh keyeh yeh kintaxtawiah. In tewilis kwehmolowa in nemilis, yolnemilis wan kwallinehnemilis itech in akin kitewia. Itech in momaka in tahtoltewilis wan awilyotewilis.

Tatewilis itech ixolal: In chiwalis tein kwehmolowa wan tsakwiliah nawatiltlakayotl itech in siwameh. Keman kiixihikaitah oso kinpowkaitah in tokniwan oso sentokniwan.

Tatewilis itech in tepalewikalimeh: tatewilis tein kinchiwah in tayekanianih oso itech in tepalewikalimeh tein ki powkaitah wan ki tsakwiliah in nawatiltlakayotl itech in siwameh, no ihkon ki tsakwiliah in kwalli chiwales panpapanpa ika ki tamiskeh ika in tatewilis.

Tatewilis itech in semi kimatilisti: akino sentamanti, keman kitsakwiliah oso kinawatiltakayo tsakwiliah keman amo kinkawah mah tahtokan oso inemiltapowihkah in siwameh, in kitsakwiliah ninchiwalis wan inemilis oso kitsakwiliah keman kinekih yeski tayekanianih.

Tatewilis itech in tepostanawatilis: In mochiwa keman ahka kikwih in tepostanawatilisti panpapanpa nemiltewis oso tahtoltewis aksa. Keman aksa teixnechtilia, panoltia, tanamaka, oso tepatilia teisa itechitech okse tokniwh amo akin kinekis kemeh ixtakopilnalmeh, tetapowilis, oso ixiitalis itech in tlakayotl itech okse tokniwh.

Temiktilis: Keman aksa kinmiktiah siwameh. Mochiwa keman aksa kikwehmolowa inawatiltlakayowh itech in siwameh, tein tami itech in temihtilis.





Amoxexelistli III

Tetlachiwilitli tlawawaloni

PanpaPanpa mah kwalli mochiwa in tein amoxtipalewilis kihtowa, tikixnechtiah in techiwalis ika mimatkilis, yehyektilil, wan mah amo kipowkai-takan oso kinixihitakan in tokniwan, mah amo kiyolkokowan, wan mah kitekipachokan inawatiltlakayotl ika imasewalnemilis wan mah nochipa kiyolpalewiah in siwameh wan in tayekananih kipiah kichiwaskheh kemih in amatl kihtowa. Ihkon kitsakwiliskeh in tewilis wan tepalewiskeh in totonaco siwameh wan masewalsiwameh keman aksa kitewis oso kiixihitas.

Ixtlamachilisti

Itech in altepet nawi Puebla onkakeh tatewilis wan teixihikaitalis tein in tokniwan amo kiitah kemih se tewilis. In tikitahkeh keman tikchiwkeh in tekit tein monotsa "tsakwilis wan tepalewilis ika in kwehmolis wan tatewilis ika in masewalsiwameh" tein ki chiwkeh itech in weyikaltamachtilyan UIEP. In tekit ixnechtih in momoka keyh ihkon kima-chtiah wan kinechtiah pilimeh itech ikalimeh.

In totonaco siwameh wan masewalsiwameh kinixihikaitah sayoh keyeh "siwameh", wan keniw moittah, keniw yolnemih, keniw motakentiah, keniw tahtowah, oso kemih amo momachtihkeh, kani tekitiah, itechi kani witseh oso kani nemih, keniw inemilis oso itech in masewaltahtol.

No ihkon momati in tayekanianih wan tein tekitiah itech in tepalewilikalimeh teixihikaitah.

In taman tsakwilis moita kemih in taman chiwalis itech in inawatiltlakayotl itech in tokniwan tein nawatia nochin taman itech keniw kitamiah ika se kwehmol. In ika masewalnemilis, in tein tokniwan nemiliah, nemiliskayot, tominkayot wan in semitematilis.

Maski onkak in taman tsakwilis, itech in



xolalmeh itech in altepet nawi in masewaltokniwan amo wel kitsakwiliah ni kwehmol iseltih, keyeh panpa kitsakwiliskeh in kwehmol moneki mah in Poitechr Jwdcial itechl estado itech Puebla oso in tepacholisti kiixmatikan.

Wan no keman sepa tewiah in totonaco siwameh wan masewalsiwameh tetapowiah keman ahsa kitewia oso kiteixikahitah, kichiwa mah in tokniwan amo kineltokikan in tayekanianih. In amoxtepalewis kipia ohtichiwalis tein kikwiseh panpa kitsakwiliskeh in tewilis wan tepalewis panpa ahsa kitewiskeh oso kiixikaitaskeh.

In sentlamantli itech in CEDAW kih-towa in weyitayekanianih kipiah ki tepalewiskeh itech in semitematilisti, tokniwan nemilisti, tominkayot mase-walnemilisti wan tepalwiliti panpa-panpa in nawatiltlakayotl kwalli neh-nemi wan kin ixmatili in siwameh wan

tagameh sinke ahsa amo ki ixpalewi-kan.

In sentlamantli makwil itech in CEDAW kihtowa in weyitayekanianih kipiah:

A) Kipataskeh in nemilis tein amo kwaltia wan kwehmolowa inemilis itech takameh wan siwameh, in tein kichiwa mah tiixmatikan in takameh kemih tein tech tayekanah, wan tein kichiwa mah siwameh amo semi kwalli yolnemikan.

B) Mah kichiwakan, ka itech in temachtilis tein nechtiah itech kalimeh, mo ita in tlakwitawiah pilimeh kemih se tekit, wan in takameh no kipiah kitlakwitlawiskeh wan kimachtiskeh inpilwan.

In sesentlamantli chikome itech in Convención Interamericana para Pre-

venir, Sancionar y Erradicar la Violencia contra la Mujer, tein no moixmati kemih Convención itech Belém Do Pará, kihtowa ke in weytayekanih kipiakh kitsakwiliskeh, wan kitamiskeh nochin tatewilis tein onkakeh wan kin kwehmolowa siwameh, ika tepalewilisti wan nochipa kewan momakas, amo tahkah kewan tepalewiskeh in:

A) Amo kitewiskeh in siwameh wan teixpowaskeh in tayekanih, wan tepalewikalimeh panpa kichiwaskeh nochi tein in amoxtepalawilis kihtowa.

B) Kwalli kichiwaskeh nochi tein in amoxtipalewilis kihtowa panpa kitsakwiliskeh wan tepalewiskeh mah tah tamí in tewilis ika in siwameh;

C) Mah kisentilikan in weyamameh ika tepalewiah penales, civiles wan administrativas ika tein tsakwiliskeh, wan kitamiskeh in tewilis ikan siwameh, no ihkon kipiakh kiwelkiskeh nochi in tein in amoxtepalawilis kihtowa.

D) Yolnankiliskeh in tahtoltepalawil panpa kitsakwiliskeh in tatewianih tein kwehmolo, mohmohti, aksa kimaka oso kichiwa tehsa tein kiixnechtis kineki miktis aksa tokniw oso kikwehmolo ni nehnemilis;

E) Mah kiixmatikan wan kwalli tahkwilokan in amatepalawil, no ihkon in chiwalis yeski ika imasewalnemilis, wan nochipa ki temoskeh ki tamiskeh ika in tewilis ika siwameh;

F) Kiixnechtiskeh in chiwalis ika tahtoltepalawianih tein kitsakwilika in tewilis ika siwameh, wan mah kitsakwilikan in tatewianih;

G) Kichiwaskeh wan ixnechtiskeh in ohtitepalawil tein tekupachokan in siwameh kewan ahsa kitewi, mah kintaxawikan kemah aksa kinkwiliah oso aksa kikwehmolowa;

H) Mah yolnankilikan in amoxtepalawil panpa kiyoltekipachoskeh in Convención.

In Convenio 169 itech la OIT, tepalewia in masewal xolalmeh ika in teixihikaitalis.

Itech in sentlamantli chikome kihtowa in masewal xolalmeh kipiakh kwalli nemiskeh, amo aka kitsakwilis wan amo aka kintewis. No ihkon itech in sentlamantli 22, tahkwilol 2, kihtowa in weytayekanih iwan masewal xolalmeh kipiakh kichiwaskeh nochi tein kipiaskah panpa kitepalawiskeh mah in siwameh wan okichpipilmeh kwalli yolemikan, wan mah amo akan kitewis oso kinikikahitas.

In sentamantli 1° tahkwilol eyi itech in weyiamat Constitución Política itech los Estados Unidos Mexicanos kitsoyotia in tayekanih mah kitekipachokan in nawatiltakayotl ika in tsakwilis wan taxtawilis kewan aksa tatewia. No ihkon kihtowa itech in sentlamantli 4° in takameh wan siwameh amo aka kitayekana okse ihkon kihtowa in weyiamatepalawil.



In amatepalawil Ley General para la Igualdad entre Mujeres y Hombres kitemowa mah siwameh wan takameh mo senpalewikan wan mah amo aksa tayekana, no ihkon kichiwaskeh amameh tein tepalewiskeh itech in xolalmeh wan itech in tepalewikalimeh. No ihkon, in amatepalawil kitemowa mah in siwameh mo yolchikawakan.

In amatepalawil Ley itech Acceso itech las Mujeres a una Vida Libre itech Violencia itech ni sentamantli 2° kihtowa ni netlahtlalis itech in weytayekanih, mah in altepemeh wan xolalmeh kipiakh ki chiwaskeh amatepalawilis tein kitekipanokan ni nawatiltakayot itech in siwameh, panpapanpa mah kwalli nemikan kemih kihtowah in weyiamatepalawilis. Itech in sentamantli 3° kihtowa in tein ika mokihtowa nochipa kitemos ni tsakwilis itech in tewilis ikan siwameh, no ihkon temos ni kwalli yolnemilis wan ni yolchikawalis.

In Plan Nacional del Desarrollo 2019-2024 se amatepalawilis tein kitekipanowa in senkwehmolis wan kihtowa keniw kitsakwiliskeh ika in kwalli chiwalis. In amat kitemowah tepalewilis itech in semitematilis, tokniwnemilis, masewalnemilis wan mah tekupachokan siwameh. In chiwalis kitemowa mah amo aksa kitayekana in siwameh. Ni chiwalis kineki kipalewis in siwameh mah kiixmatilikan itech in amameh tein tekupachowah in tokniwan, mah kinechtilikan in tayekanih keniw kitepalawiskeh in siwameh, mah kitekipachokan ni nemilis, wan ni nawatiltakayotl, wan mah in tepalewikalimeh senpalewikan wan mah mosentilikan panpa kitekipachokan siwameh.

Mah in Programa Nacional para la Igualdad entre Mujeres y Hombres 2020-2024 se amatepalawil itech in Plan Nacional de Desarrollo 2019-2024. Wan ni sentamantli 1° itech in Weyiamat Constitución Política de los Estados Unidos Mexicanos yeski in kwalli chiwalis itech in nawatiltakayotl. Ni tlatsoyotilisti itech in tayekanih kitekipachos in nawatiltakayo itech nochi xolalmeh wan kitemoskeh mah kwalli

yeknemikan.

In kitsakwilia nochi chiwalis tein teixihikaita sayoh keyeh masewalmeh, amo kitominpiah, ton xiwit ki piah, kemih ika ahsa nemih, ako ki kwelintah, katin ni tiopan, kemih amo yeski kemih ohseki tokniwan, oso okse taman.

Se chiwalis itech in Programa Nacional para la Igualdad entre Mujeres y Hombres 2020-2024 yeski ki temos iseltinehnemil itech in siwameh wan siwapipilmeh wan mah amo kiixihikaitakah keyeh masewalmeh, afromexicanas oso keyh tamantikeh, no ihkon:

1. Ki tekipachoskeh in nemiltepalewilis wan tepantlahtowilis ika in siwameh ako kitewiah panpa mah ihkon amo aksa kintsakwiliah wan mah kwalli yolnehnemikan.

2. Ki tekipachoskeh in weyi amtepalewil panpapanpa ihkon in tepalewikalimeh ki tsakwilikan ako ki awilotewikan.

In Programa Nacional itech los Pueblos Indígenas 2018-2024 kitemowa kitekipachos in nawatiltlakayotl itech in masewal xolalmeh wan afromexicanos, wan mah ihkon iseltinehnemikan, wan kipalewiskeh ako kitewiah oso kiixihitah. Itech ichiwalis in matepalewil ki neki ixnechtis in nawatiltlakayotl itech in masewalxolalmeh wan afromexicanos xolalmeh, mah kichiwakan sentiltepalewilis ika masewalnemilis, mah kinechtilikan in tepalewikalimeh panpa tepalewiskeh wan kwalli tenpalewikan ako ki tewiah.

Mah in Plan Estatal itech Itechsarrolo 2019-2024 itech Puebla, itech ni tahkwilol 4 itech in tayekanawatiani, kitemowa mah nochi senemikan, kitehmowa mah nochi tokniwan wel motepahtikan wan mah amo aksa amo kipalewikan, no kitemowa kitamis ika in netolinisti wan ika in taman nehnemilis. In tahkwilol, motekipachowa ika in chiwales tein tepalewia mah tokniwan momachtikan, kiyolchikawah nimasewalnemilis, ixnechtilisti itech in nawatiltlakayotl, yeh ika kitamiskah ika in teixihikaitalis ika in yolchikawalis itech ni nemilis.

Mah in Programa itech Igualdad entre Mujeres y Hombres 2020-2024 itech in xolal Puebla, kipia kitekipachos in nawatiltlakayotl itech in siwameh, kipia kichiwah mah in masewal-siwameh sentekitikah panpapanpa kiweyichiwahin talmeh itechiteh altepet Puebla, mah nochi tekitepalewikan wan mah tominchikawakan in siwameh. In chiwalis tein tepalewis:

1. Mah kichiwakan se yehyekolis itech in weyi amatepalewil itechiteh altepet tein kitekipachowa nawatiltlakayotl, mah amo onka ixihikaitalis wan mah siwameh kwalli nehnemikan, mah amo aksa kin tewi.

2. Mah kwalli tepalewikan in topilmeh itech in altepet panpa kitsakwiliskah wan tepalewiskeh ika in tatewilis ika in siwameh.



3. Tepalewil keman onkas tatewilis ika in amoxtepalewil, kemih in weyi amatepalewil ika miakeh tepalewianih tein taman ixmatikan kenih kpalewiskeh in masewalsiwameh.

Mah in sentanawatilis 33 tein temowa ikwallinemilis itech siwameh in CEDAW, kiixnechtia in chiwalis tein amo tech kawa mah in siwameh kichiwaskah ton kinekiskah, in amo tahtoltepalewilis itech in tayekanianih amo kawa mah tami in kwehmol, nochi in keyeh ki moliah takameh tayekaniah in siwameh, keyeh in amatepalewil ihkon kimatiah wan kiixikahitah in tokniwan.

Mah in sentanawatil 19 ika in tatewilis ika siwameh itech in CEDAW kihtowa in tatewilis no se teixihikaitalis ikan siwameh.

3.1. In masewaltsakwilisti

Kemih amo onkak masewaltsakwilisti itech in altepet 4 kitsakwilia in nawatiltlakayotl itech in totonaco siwameh wan masewalsiwameh. Tikpiah tiixmatiskeh in sen nawatiltlakayotl itech in masewal xolalmeh wan kenih in tepalewia mah tokniwan kwalli yolnehnemikan.

In tsakwallis tein teixmakah tayekania-nih kintemakilia in weyitayekania-nih. No ihkon in masewalkalimeh tein tepalewiah kichiwhkeh in weyitayekania-nih keman kiixmatikeh in nawatilt-lakayo itech in masewal xolalme itech in weyi amatepalewil, yeh ika kikwih kemih ni tsakwallis, keyeh kichiwak in Poder Judicial itechl Estado itech Puebla.

Ika in masewalnemilis mochiamah kiixmatikan in taman tsakwilis, wan ihkon mo senpalewikan in weyitayekania-nih wan masewal tayekania-nih wan amo aka tayekanas.

Ihkon in UIEP kiyoltekipachowa in masewalnemilis ika in weyi temachtil kitokaitiah Licenciatura itech Derecho con Enfoque Intercultural. Ika in weyimachtilis kisaskeh masewal tepantlah-toanis, tein tahtowah in totonaco wan masewaltahtol, panpa ixmatiskeh ni masewal tsakwilisti.



3.2. ¿Tonika moahsih in totonaco siwameh wan masewalsiwameh itech ixolal keman kitemowah tepalewilis?

Mah itech in xolalme amo onka masewal tepalewilis kichiwa mah in siwameh kitemokan itech in weyitayekania-nih tepalewilis, wan kemah tetahtaniah tepalewil kipolokan tomin wan mah yakan ohse xolal, wan no kitewiah keman ohseka tetapowiah ton kichiwilikeh, wan kiixhikaitah in totonaco siwameh wan masewalsiwameh.

In kemih nemih in tokniwan wan kanochi tomin kipiah no ki chiwa mah welikan oso amo welikan kitemoskeh tepalewil, keman in totonaco siwameh wan masewalsiwameh iwih kitemotih tepalewilis itech in tepalewilkalimeh itech ni xolalme kitepanoltiah ika in weyikalimeh tein tepalewiah itech in altepeme, wan kipiah yaskeh itech in altepet tein wehka yetokeh.

Tipiah tiixnechtiskeh ke in weyitepalewianih kitayekaniah in masewaltepalewianih wan amo kinixmatiliah kemih se tepalewilis itech in tokniwan keman motewiah itech in masewal xolalme.

IV

Amoxexelistli IV

Xonexkachiwalis

In tatewilis tein kachi kwehmolowa in totonaco siwameh wan masewal siwameh yeski in temagalis, no ihkon momati onkakeh onseki tewilis tein kinkwehmolowa, sayoh ke in tokniwan amo kiittah kemih se tatewil oso kimatih kemih tehsa ika nehnemih keyeh ihkon kinnechtilihkeh keman katkah pilimeh. In tahtoltewilis oso keman ahsa kitentewiah amo kitah kemih se tewilis oso se kwehmol in tokniwan amo kipowhkaitah keyeh ihkon kinmachtikkeh. In te tsikitsinchiwah in tewilis kichiwa mah amo kitakan in teixihikaitalis kemih se kwehmol ikan siwameh, wan kichiwa mah amo kiixmatilikan ni nawatiltlakayotl itechitech tokniwan, siwameh wan masewalsiwameh.

Panpa tiktsakwiliskeh in tatewilis wan ixihikaitalis tikpiah tiixnechtiskeh in kwehmol tein kipanowiah in totonaco siwameh wan maewalsiwameh, keman tetapowiah oso keman iwiw kitemotih tepalewilis wan ihkon kimatikan welih yaskeh ki temotih tepalewilis keman ahsa ki temaka oso kintaman tewiah.

Niman, tiktapowiah in chiwalis panpa tsakwiliskeh in tewilis tein motekipanowah ika in tsakwilis itech in Plan de Acción 2020 ika in Declaratoria itech Alerta de Violencia de Género contra las Mujeres para el Estado itech Puebla (AVGM). In chiwalis amo kitsakwiliah in ohseki chiwalis:

■ Tapowilis wan sentahtowilis panpa ixnechtiskeh in tewilis wan ixihikaitalis tein kichiwah in tayekanianih itechitech xolalmeh keman ahsa kitemowa tepalewil.

No ihkon wel temoskeh tepalewilis itech DIF.

■ Mah kichiwakan tekimeh itech in xolalmeh panpa kiixmatilikan ni nawatiltlakayotl itech in totonaco siwameh wan masewal siwameh wan mah kitsakwilikan in tewilis.

■ Mah in tayekanianih kichiwaka in yolilistlahtolli sentilis itech xolalmeh, In weyikaltamachtli UIEP wan in kaltepalewiani itech in masewaltokniwan INPI, kanpa mo ixitakan in tahtolnemilis itechitech siwameh tein tech tapowihkeh itech in tekit panpa kitemakakan ni nemilis itech kenih kitsakwiliskeh in tatewil wan teixihikaitalis, no ihkon ki ixitaskeh in tekit tein ixnechtia kanochi siwameh kintewiah. Motemowa mah mosentiliah nochi xiwimeh.

■ Kichiwaskeh wan ixnechtiskeh sentahtolis ika in tatewilis wan teixihikaitalis, mah kitemokan mah siwameh wan tagameh mosenpalewikan, wan mah amo aka tayekana:

■ Mah kimachtikan in siwatayekanianih wan tayekanianih tein tepalewiah (ako tekutih itech in tepacholistli itechitech xolalmeh wan itech in DIF, tepalewikalimeh, topilmeh, wan ohseki) wan itech in kaltepahtianih panpa kitsakwiliskeh in tewilis wan teixihikaitalis itech in totonaco siwameh wan masewalsiwameh.



■ Ika in machtianih, temachtihkeh wan ako tekitiah itech in kaltamachtilyon itech nochi kaltamachtilyon wan weyikaltamachtilyon itech nochi xolalmeh.

■ Ika in totonaco siwameh wan masewalsiwameh.

■ Kichiwaskeh wan ki ixnechtiskeh ako tepalewiah wan keniw wan kani kinkahsiskeh, nochi in ika imasewaltah-
tol itechitech siwameh, tagameh wan ohseki tokniwan tein
wel temoskeh tepalewil keman ahsa kintewiah wan in
tepalewanianih ki tekipachokan.

■ Kipiah kichiwaskeh amatepalewilis ika kimachtis-
keh in tatewianih.

■ Kichiwaskeh yolilistlah-tolli itech in xolalmeh ika
kitsakwiliskeh, ika masewalnemilis, wan mah kitekipa-
chokan in nawatiltlakayotl itech in siwameh.

■ Implementar wna estrategia itech comunicaci3n
social para la prevenci3n itech la violencia y discriminaci3n.

■ Mah kitahtolpalewikan wan mah kitekipacho se

tepantlahtoani, no ihkon kinemiltepalewiskeh wan amo
kintahtaniskeh tomin, wan ika imasewaltah-tol itech in
tononaco siwameh wan masewalsiwameh tein kitewiah oso
kiixihikaitah.

■ Kichiwaskeh se sentilis itech in xolalmeh kani
kinechtiskeh in tokniwan mah mo senpalewikan wan mah
amo aka tayekana, panpa mah ihkon in siwameh no tekiti-
kan wan moyolchikawakan panpa kimatikan wel kichiw-
askeh tein kinekiskeh.

■ Mah kichiwakan siwameh sentilis tein temachtis-
keh ika kitsakwiliskeh wan kitepalewiskeh in tatewilis wan
teixihikaitalis ika in totonaco siwameh wan masewalsiwa-
meh itech in 10 xolalmeh itech in altepet 4 Puebla.

■ Kichiwaskeh wan tekipachoskeh insentemachtilis
panpa in totonaco siwameh wan masewalsiwameh moma-
chtiskeh itech se tekit tein kipalewis mah kitanikan ni tomin
wan mah amo ahsa kintominkwiliah.



V

Amoxexelistli V

Ohtichiwalis panpa ti tepalewiskeh keman onkas tatewilis

In totonaco siwameh wan masewalsiwameh tein kitewiah kiohti tsakwiliah keman tetapowiah tein kichiwilihkeh, keman kichiwah in amatetapowilis wan kitohtokaskeh ni tetapowilis, ahsa keyeh in tepalewikalimeh wehka yetokeh, oso ohsepa ki tewiah keman kitapowiah in tayekanianih wan ni xankawan, oso amo kipalewiah ika ni kwehmol.

Tik piah ti matiskeh keniw nemiliah in totonaco xolalmeh wan masewal xolalmeh wan keniw nemih itech ikalimeh ika ni xankawan wan in keniw nemih in siwameh kichiwa mah kintewikan wan mah amo kitakan in kwehmol kemih se tewilis, ahsa in tatewil kiixmatiah kemih se chiwalis tein panowa itech nochi kalimeh.

In totonaco siwameh wan masewalsiwameh itech in altepet 4 Puebla tein inaman tewiah kipiah ki tekkipachoskeh ni nawatiltlakayotl kiman iwih itech in tepalewikalimeh tein kinemilpalewikan, kitahtolpalewikan wan kitekipachokan, ika ni masewalnemilis wan ika ni masewaltahtol. Kipiah ixnechtiskeh keniw kipiah tepalewiskeh keman ahsa kitewiah.

Itech in xolalmeh yetok in Ley para el Acceso itech las Mwjes a wna Vida Libre itech Violencia itechl Estado itech Puebla. In amtepalewil kitemowa kitsakwilis wan kitamis ika in tewilis ika siwameh, no ihkon kitemowa ni kwalli yolnehnemilis wan ni tekiteh itech in semitematlisti wan itech in

masewalnemilisti itech in altepet.

In tayekanianih wan tepalewianih kipiah kwalli kinohnotsaskeh in siwameh ako kitewiah wan mah amo keman kilwikan ke ikwehmol amo se weyitewilis. Kipiah kitekipachoskeh wan kitemoskeh ni kwalli yolnehnemilis, mah kinpahtikan, mah kipalewi se tepantlahtoani wan mah kinemilpalewikan.

5.1¿Ton kipiah kichiwaskkeh tayekanianih keman onkaskeh tatewilis?

— Kipiah kitemoskeh ni kwalli yolnehnemilis itech in siwameh wan itech ni xankawan.

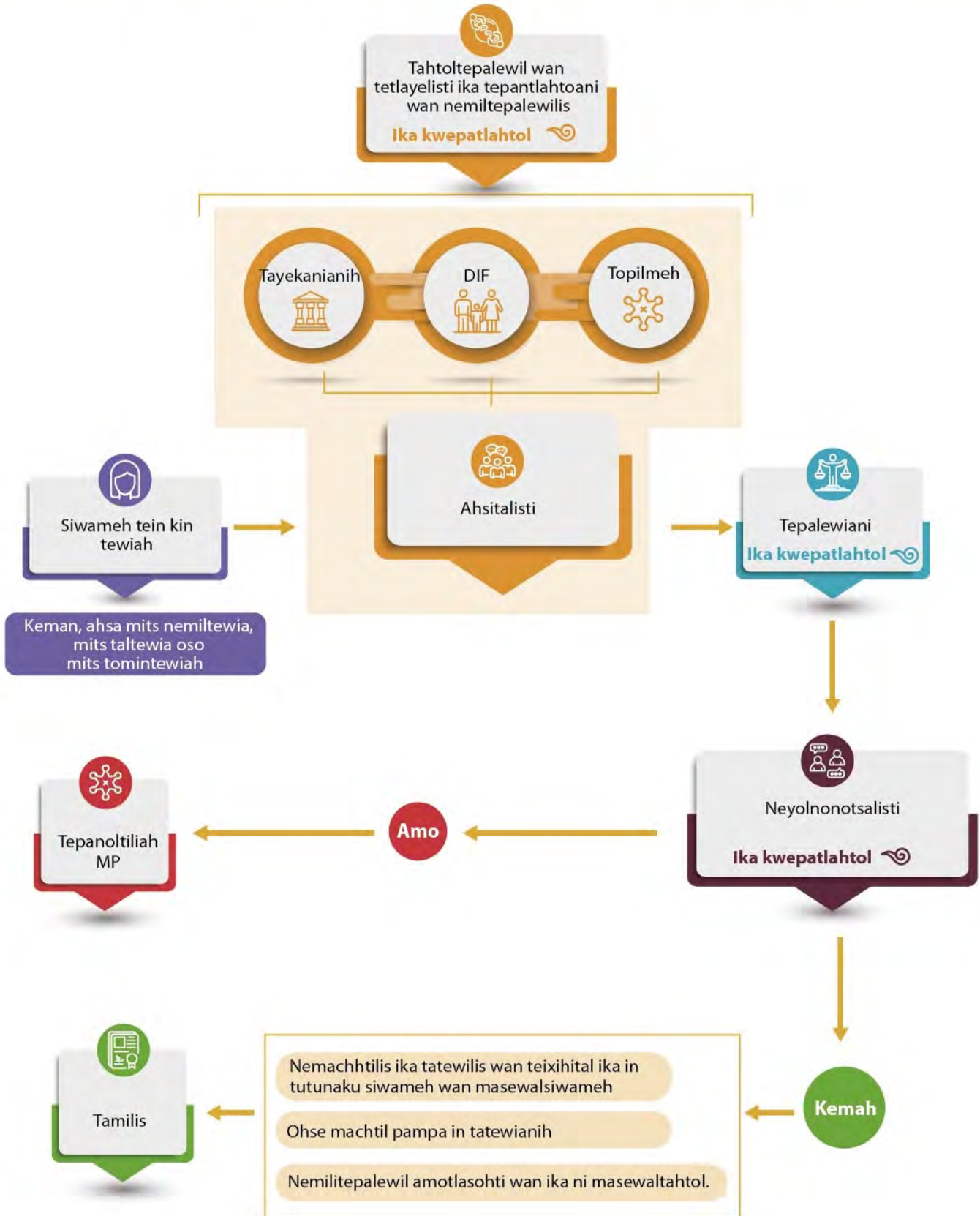
— Kipiah kipiaskkeh se kwepatahtol itech in totonaco tahtol wan masewaltahtol.

— Kipiah kipalewiskeh ika ni tepahtilis, kitahtolpalewiskeh wan kinemilpalewiskeh ika in totonaco tahtol wan masewaltahtol.

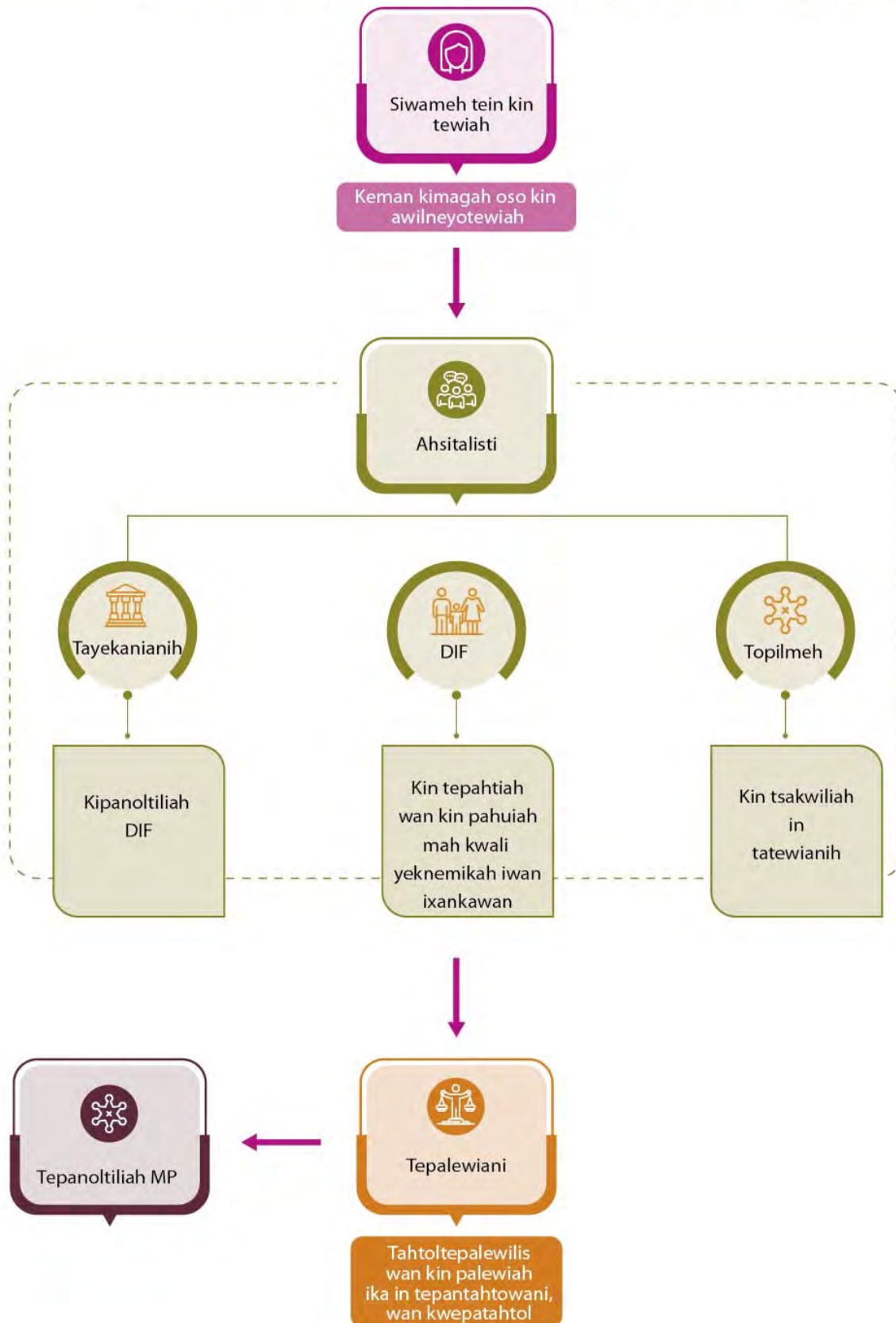
— Kipiah kitepantlahtopalewiskeh itech in ohtichiwalis kanpa kitetapowiah ni tewilis.



Tahkwilol 1. Ohtichiwalis kewan ahsa kinemiltewiah, kitomintewilah oso kitaltewilah.



Tahkwilol 2. Ohtichowalis kewan ahsa tech magatewia oso tech awilneyotewiah.



5.2 ¿Katin ohseki tepalewilis tlatsontekilili wan nemiltepalawilis onkakeh panpa kin palewiskeh in siwameh?



Tepalewil nohnotsalonis Telmwjer

■ Temakaskhe tepalewil ika in taman tepalewianih, mah amo wehkawa in tepalewilis, mah amo ahsa kiixmati wan mah amo tomin tahtanikan, yeski ika in nemilis tein tekipachowa in siwameh wan ni nawatiltlakayotl.

■ Kaltepalawil: Secretaría itech Igwaldad Swstantiva.

■ Ohtichiwalisti:

■ Tanohnotsas itech Telmwjer (tlanohnotspowalis) 222 232 37 38 oso itech in isiwka tlanohnotspowalis 911.

■ Tanankilis se tepalewiani itech in Telmwjer panpa ki kakis ni tapowilis itech ako kikwehmolowah wan kitaskhe kemih moneki mah kitohtokakan se tepalewiani.

■ Mo makas nemiltepalawilis, tepalewilis ika se tepantlahtoani, oso kinohtokaskeh se tepalewiani itech ikali itech in ako kitewiah.

■ Kipanoltiskeh in siwameh ako kitewiah itech in tepalewikalimeh tein kitekipachoskeh wan kipalewiskeh ika in tewilis.



Amo ti iseltiyetok

■ Se sentipalewisti panpa kipalewiske in siwameh ako kitewiah. Itech in sentipalewilsti yetos in Secretaría itech Igualdad Sustantiva panpa tepalewiskeh wan amo tomin tahtaniskeh, ihkon kiyolchikawaskeh in siwameh wan inkon sentamiskeh ika in tatewilis.

■ Taman tepalewilis:

■ Nemiltepalawilis wan tomintepalewilis.

■ Tahtoltepalawilis ika tepantlahtoani wan kinyoltekipachoskeh.

■ Kimakaskhe tesililoyan panpa in siwameh wan ni swapipilmeh wan okichpipilmeh (pilimeh).

■ Tepalewianih:

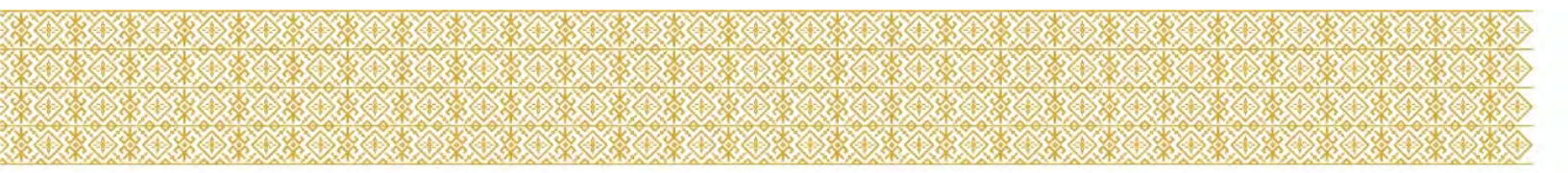
📍 Kani yetok: 2 swr 902 Col. Centro. Puebla, Pwe.

☎ Tlanohnotspowalis: 222 232 37 38

📞 Tlanohnotspowalis itech WhatsApp: 222 356 4020 wan 222 360 5590

📱 Facebook, Twitter, Instagram: Amo ti iseltiyetok.





**Kalimeh itechitech masewalsiwameh
(CAMI), XANAY XTACHIWIN LAKCHAJAN A.C.**



■ In CAMI se kal kanpa tekipachowah in nawatiltlakayotl itech in masewal siwameh. Kitemowa kitsakwilis in tewilis ika in siwameh, kani mo temaka tepalewilis ika inmasewalnemilis, wan kitekipachos in siwameh wan ni nawatiltlakayotl.

■ Tein temakah wan tein kichiwah:

- Tepalewilis, tekipacholis wan tahtolpalewilis keman ako kitewiah.
- Kwepatahtol itech in masewaltahtol.
- Tahtoltepalewilis ika se tepantlahtoani.
- Tapahtilis.
- Nemiltepalewilis.
- Tlachiwalis kanpa tapowiah itech in tsakwilis itechitech tewilis wan kitekipa chowan siwameh.
- Tlachiwalis itech in kaltamachtilyon.
- Toltekayolis itech in taman tahtolis.
- Tekitilis kanpa yaskeh tepahtianih wan panpa kitsakwiliskeh in siwat kokolis, keman kichiwaskeh tanohnotsalis panpa kihtoskeh kanochi pilimeh kinekih kipiaskew wan kemandia wan no kimachtiskeh in telpokameh wan ixpokameh panpa kimatikan katin pahti wel kikwiskeh panpa amo kipiaskew pilimeh kemih amo kinekih.

■ ¿Kenih ahsiskeh itech in CAMI?

- Yaskeh itech CAMI, tein yetok itech in ohti Vicente Suárez No.12, Colonia Centro, C.P. 73480. Ixtepec, Puebla, kani in siwameh ki panoltiskeh ika in tepalewilikalimeh tein taman kinpalewiskeh.

■ ¿Ton chiwaskeh keman onkas se tatewilis?

- In CAMI tanewhtiskeh ni palewis wan amo tetahtaniskeh tomin wan kitekipachoskeh in siwameh ako kitewiah, keyeh kipia piah tepahtianih nemiltepalewianih wan tepantlahtoani.



Maski in teixihikaitalis amo mo temati kemih se kwehmol itech in xolalmeh, kintatewia in totonaco siwameh wan masewalsiwameh. In siwameh senkihtowah itech ni yolneh-nemilis itech ni xolalmeh wan itech ohseki xolalmeh.

Keniw mo itah, keniw mo takentiah, keniw tahtowan, keniw mo machtihkeh, kani tekitiah, kanochi tomin kipiah ako ni xankawan wan keniw yehika kiixihikaitah in totonaco siwameh wan masewal siwameh. In nemilis kani in tagameh tayekanah amo kikwehmolowa in xolalmeh, amo kimatih kemih se tewilis keyeh ihkon kin machtiah itech ikalimeh, yehika moneki mah temakakan tahtoltepalewilis itech in teixihikaitalis kemih se tewilis tein kitsakwilia ni nawatiltlakayotl itech in totonaco siwameh wan masewalsiwameh.

In teixihikaitali moita keman ahsa kitsakwilia mah in nawatiltlakayotl itech in tokniwan mo ixnechtikan (sentlamantli 4 LFPED).

In chiwalis tein teixmatiah siwameh wan tagameh, mo makah keyeh ihkon ni nemilis tein kinechtilih, oso keyeh ahsa tagat oso siwat, kanochi xiwit kipiah, kanochi tomin kipiah, ni kokolisti, ni tahtol, ni tiopa wan ni nemilis wan ohse tamantilisti.

In nemilis wan chiwalis tein teixmatia siwameh itechitech tagameh kipia miak taman tatewilis. In totonaco siwameh wan masewalsiwameh no wel kichiwaskeh in teixmatilis tein kikwehmolowa ni yolnehnemilis wan ki kokowa ni nemilis.

Maski in teixihikaitalis amo moita kemih se tewilis itech ni nemilis itech in masewalsiwameh, tikpiah ti ixmatischek wan teixnechtiskek kemih se kwehmol, keyeh in tewilis, keyeh amo mo machtiah, keyeh amo tahtowah koyotahtol, wan keyeh amo kitewiah ne nemilis. Itech in altepet 4 Puebla, in teixihikaitalis mo maka wan amo kiita ni masewalnemilis wan ni chiwalis, yehika kipiah tehsa kichiwaskeh panpa kitsakwiliskek in tatewilis.

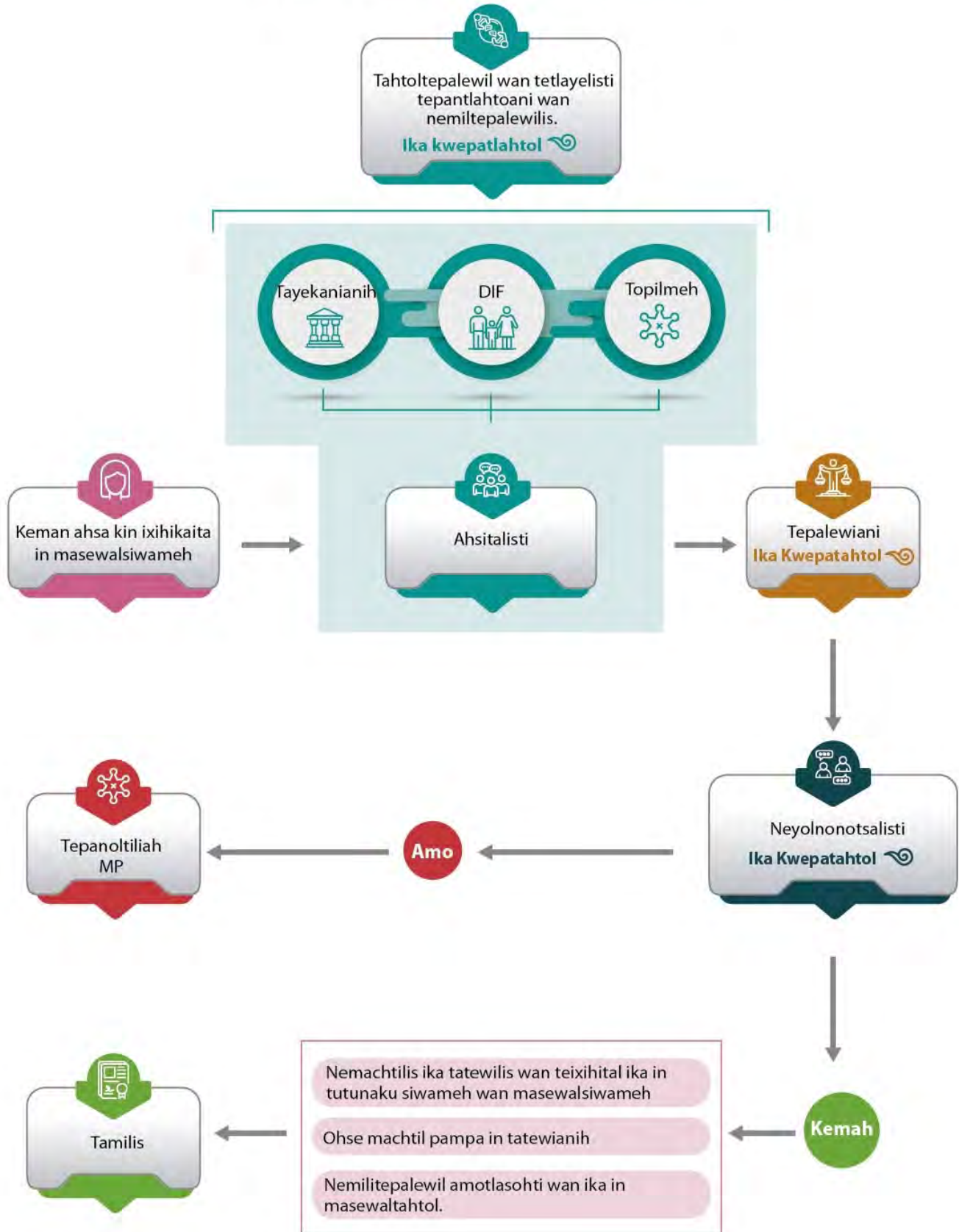
6.1 ¿Ton kipiah kichiwaskeh in tayekanianih keman ahsa kiixihikaitah?

- Amo aka kihtos in tewilis ika siwameh amo se weyitewilis.
- Kipiah kitahtoltepalewiskeh panpa kiixmatischek ni nawatiltlakayotl kemih masewalsiwameh.

- Kipiaskeh kwepatahtol itech in totonaco tahtol wan masewaltahtol.
- Kinmakaskeh tepalewilis ika tepantlahtoani wan nemilte-palewilis ika in nemilis tein tekipachowa siwameh.
- Kipiah kitekipachoskeh itech in ohtichiwalis itech in tetapowilis keman ahsa kitewia.



Tahkwilol 3. Ohtichiwalis kewan ahsa tech ixihikaita.



6.2 ¿Keniw wel ti teixpowiliskeh in ixihikaitalis?

- Mah ti teixpowilikan itech CONAPRED.
- Sentilis tein kichiwak in LFPED. Kitemowa kichiwas amatepalewilis tein tepalewikan tohtokalis itech in masewalnemilis wan nochi nemilis itech in tokniwan panpa tepalewikan ika mah amo aki tayekana.
- Kiselia wan temaka tepalewis ika ni kwehmol keman ahsa kiixihikaita, no ihkon kin maka ekawilistli nochi tokniwan.
- Chiwalis panpa kiixnechtiskeh se tahtanilis oso kwehmol:
 - Itech tlanohnotspowalis, pewah lunes wan tamin jueves 9:00 tsakwah 17:30 wan viernes itechitech 9:00 a 15:00 itech in tlanohnotspowalis: (55) 52621490 oso 800 5430033 ohsekimeh 5410, 5418, 5419, 5421, 5423 wan 5442
 - Keman ywih oso keman ixnechtia se tahkwilol itech in weyikalimeh (Londres No.247, Colonia Juárez, Alcaldía Cuauhtémoc, C.P. 06600. Ciudad de México).
 - Itech in tepos onowayan **www.conapred.org.mx**
 - Itech in tepos tahkwilolis **quejas@conapred.org.mx**
- ¿Keniw ixnechtiskeh se kwehmol itech tepos tahkwilolis?
- Kalaki itech in tepos onowayan itech in CONAPRED: **www.conapred.org.mx**
- Xi tsopona: xi tsopona nika panpa ti ixnechtis se kwehmol
- Xi pechonti in tahkwilol itechitech mo kwehmol itech in tepos onowayan
- ¿Keniw mo tohtoka se tahtanilis itech se kwehmol?
- Tanohnotsa itech in nohnotspowali 800 5430033 oso (55) 52621490.



Kali itechitech masewalsiwameh (CAMI), XANAY XTACHIWIN LAKCHAJAN A.C.

Ohti Vicente Suárez No.12, Colonia Centro, C.P. 73480. Ixtepec, Puebla

Tepos tahkwilolis: cami_ixtepec@hotmail.com

Tlanohnotspowalis: 233 314 0152

Consejo Nacional Para Prevenir la Discriminación (CONAPRED)

Londres No.247, Colonia Juárez, Alcaldía Cuauhtémoc, C.P. 06600. Ciudad de México

Tepos tahkwilolis: quejas@conapred.org.mx

Tepos onowayan: www.conapred.org.mx

Tlanohnotspowalis: CDMX (55) 52621490 Resto itechl país: 800 5430033 extensiones 5410, 5418, 5419, 5421, 5423 y 5442

Centro Coordinador de Pueblos Indígenas

Domicilio Conocido S/N, Centro, C.P. 73470. Huehuetla, Puebla

Tlanohnotspowalis: 233 314 81 19

Xolal Atlequisayan

Cuauhtémoc S/N, Colonia Centro, C.P. 73490. Atleqwisayan, Puebla

Tlanohnotspowalis: 233 318 60 05

Xolal Caxhuacan

Ohti 24 itech febrero No.402, Colonia Centro, C.P.73520. Caxhuacan, Puebla

Xolal Huehuetla

Domicilio Conocido, Centro, C.P. 74120. Huehuetla, Puebla

Xolal Hueytlalpan

Plaza itech la Constitución No.1, Colonia Centro, Hueytlalpan, Puebla

Xolal Hueytlalpan

Weyikaltepalawiani S/N, C.P. 73450. Hueytlalpan, Puebla

Tepos tahkwilolis: contacto@huitzilandeserdan.gob.mx

Tlanohnotspowalis: 233 000 0000

Xolal Ixtepec

Calle Reforma S/N, Col. Centro, ixtepec, Puebla C.P. 73480

Tlanohnotspowalis:2331261742

Xolal Olintla

Calle Benito Juárez S/N, Centro, C.P. 73400. Olintla, Puebla Municipio de Xochitlán de Vicente Suárez

Xolal Xochitlán itech Vicente Suárez

Calle Vicente Suárez No.1, Colonia Centro, Xochitlán itech Vicente Suárez, Puebla

Tlanohnotspowalis: 233 314 9006

Xolal Zapotitlán Méndez

Avenida Dr. Gonzalo Bawtista, Zapotitlán itech Méndez, Puebla

Xolal Zongozotla

Presidencia municipal. Calle Principal 2002, Centro. C.P. 73380

Secretaría de Igualdad Sustantiva (Dirección de Atención a Mujeres Víctimas de Violencia)

Calle 2 Sur No. 902, Colonia Centro, C.P. 72000. Puebla, Puebla

Tlanohnotspowalis: 222 232 37 38 (línea directa)

Isiwka tlanohnotspowalis: 911

T

Tahkwilolis

AVGM	Alerta de Violencia de Género contra las Mujeres
CAMI	Casa de la Mujer Indígena
CEDAW	Convención sobre la Eliminación de todas las Formas de Discriminación contra la Mujer
CCPI	Centro Coordinador de Pueblos Indígenas
CONAPRED	Consejo Nacional Para Prevenir la Discriminación
DIF	Sistema para el Desarrollo Integral de la Familia
INPI	Instituto Nacional de los Pueblos Indígenas
LFPEd	Ley Federal para Prevenir y Eliminar la Discriminación
LGAMVLV	Ley General de Acceso de las Mujeres a una Vida Libre de Violencia
OIT	Organización Internacional del Trabajo
UIEP	Universidad Intercultural del Estado de Puebla



GOBIERNO DE MÉXICO

INPI
INSTITUTO NACIONAL DE LOS PUEBLOS INDÍGENAS

EDUCACIÓN
SECRETARÍA DE EDUCACIÓN PÚBLICA

Gobierno de Puebla
Hacer historia. Hacer futuro.

Secretaría de Educación
Gobierno de Puebla



- ATLEQUIZAYAN
- CAXHUACAN
- HUEHUETLA
- HUEYTLALPAN
- HUITZILAN
- IXTEPEC
- OLINTLA
- XOCHITLÁN
- ZAPOTITLÁN
- ZONGOZOTLA